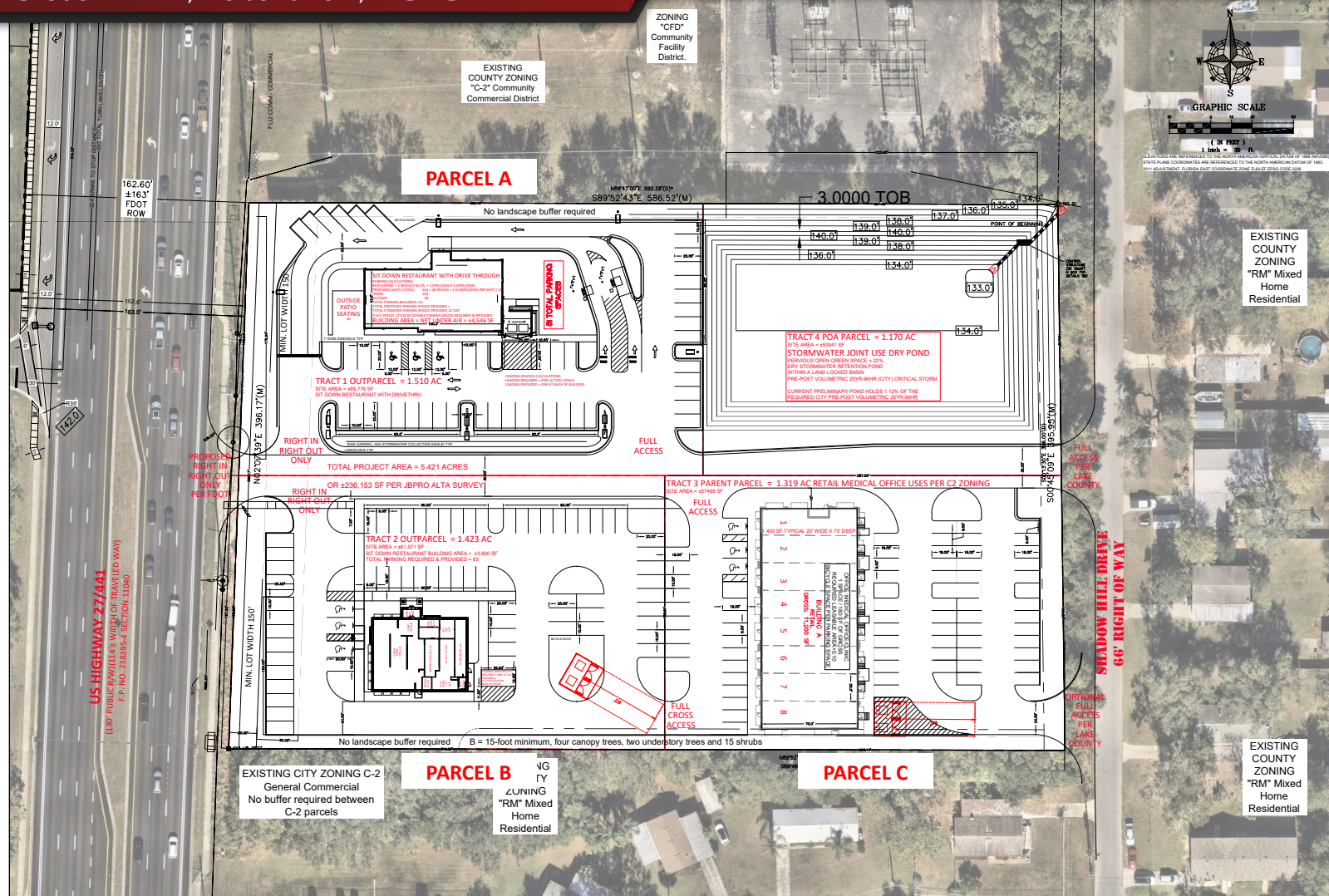




# Fruitland Park Retail & Medical Office

Shadow Hill Dr, Fruitland Park, FL 34731



PARCEL	ACREAGE	BLDG. AREA	BUILDING USE	FEATURES	PARKING	LEASE TYPE
A	1.510 AC	4,546 SF	Restaurant	Drive-thru; outdoor patio	51 spaces	Ground Lease
B	1.423 AC	3,800 SF	Restaurant	-	63 spaces	Ground Lease
C	1.319 AC	11,200 SF	Retail & Medical/Office	1,400 SF minimum (20' x 70')	74 spaces	TBD

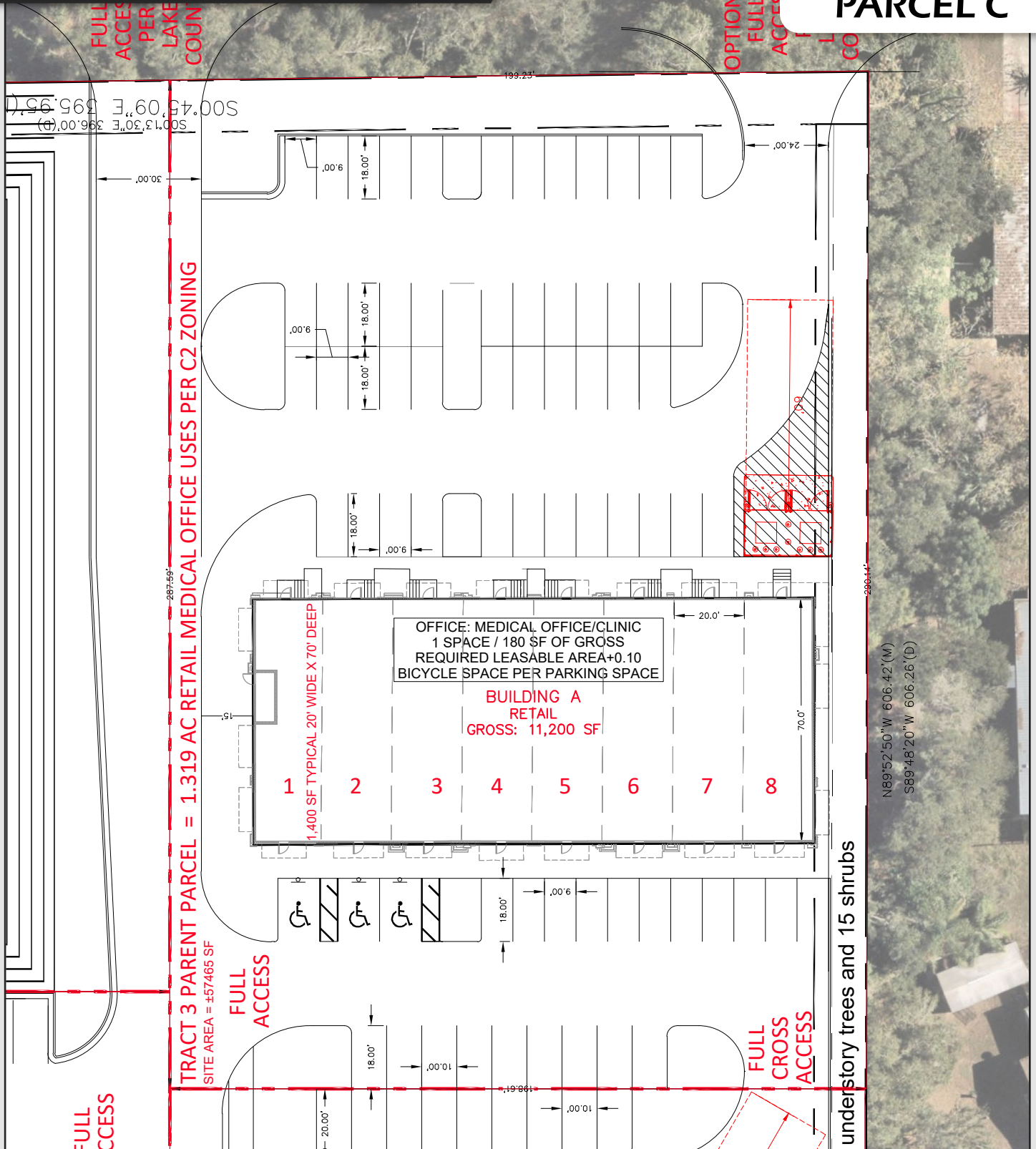
CONTACT FOR MORE INFORMATION:

**Marie Shorey, CCIM**  
(407) 383-8142  
Marie@palkiper.com

# Fruitland Park Retail & Medical Office

Shadow Hill Dr, Fruitland Park, FL 34731

## PARCEL C



CONTACT FOR MORE INFORMATION:

**Marie Shorey, CCIM**  
(407) 383-8142  
Marie@palkiper.com

# Fruitland Park Retail & Medical Office

Shadow Hill Dr, Fruitland Park, FL 34731

**Palkiper**  
Commercial Real Estate Services  
Licensed Real Estate Broker



CONTACT FOR MORE INFORMATION:

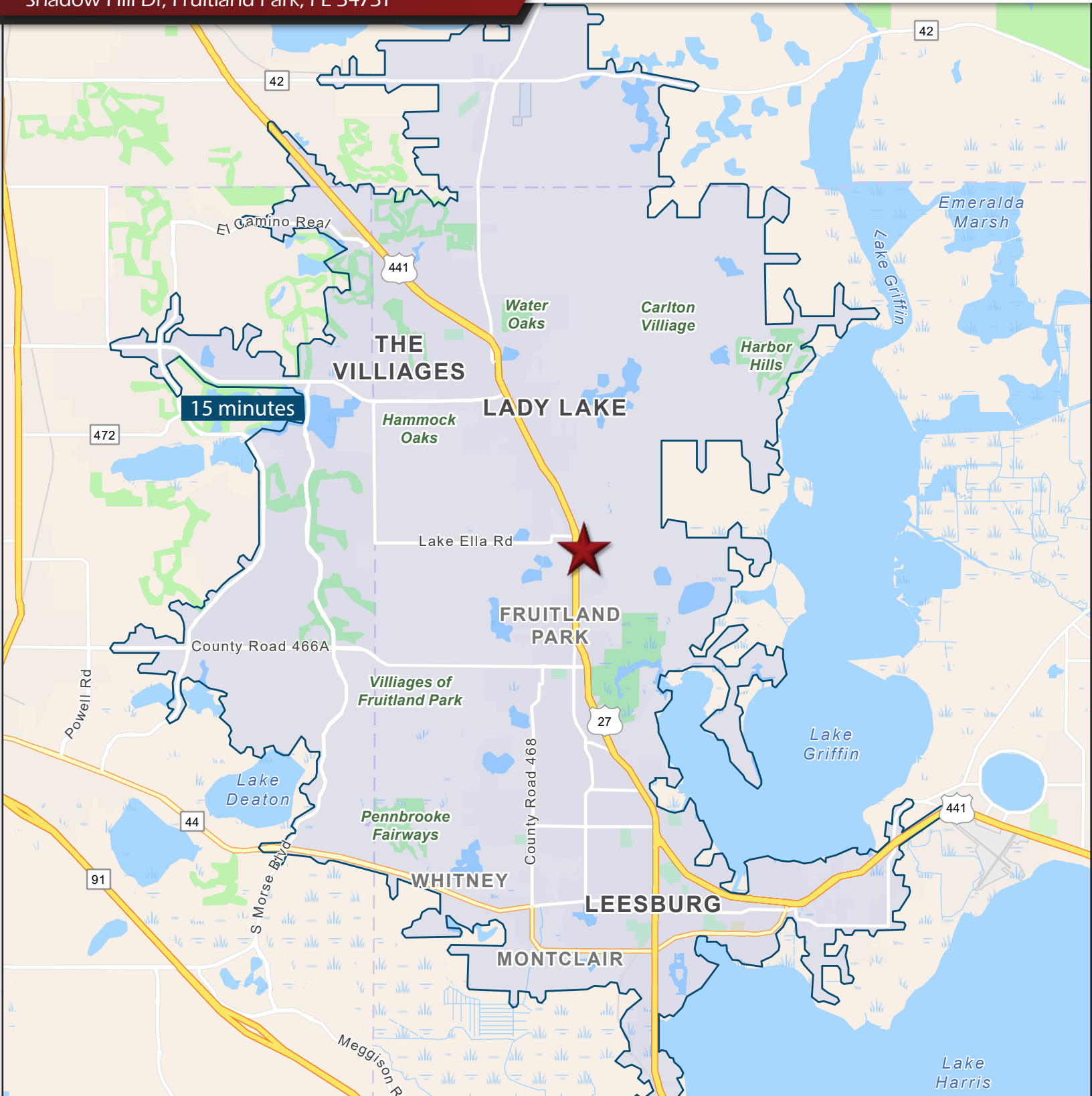
**Marie Shorey, CCIM**

(407) 383-8142

[Marie@palkiper.com](mailto:Marie@palkiper.com)

# Fruitland Park Retail & Medical Office

Shadow Hill Dr, Fruitland Park, FL 34731



CONTACT FOR MORE INFORMATION:

**Marie Shorey, CCIM**

(407) 383-8142

[Marie@palkiper.com](mailto:Marie@palkiper.com)